

Welcome

The Rancocas Nature Center encompasses 210 acres of land as part of Rancocas State Park. With 3 miles of trails, visitors can explore a variety of habitats, including meadows, forests, and wetlands, as well as an old white pine plantation. The Center itself has been operating since 1977. Since then, the nature center has been providing educational programs for schools, scouts, and other organized groups, as well as the general public.

Visitors can observe the various habitats through the wildlife blinds or by simply taking a rest on one of the benches along the trails. The Rancocas Nature Center is home to a variety of wildlife. Visitors can observe many different types of birds, including owls, warblers, water birds and more. The small pond behind the center is a perfect place to watch dragonflies and even spy a few frogs. Be sure to bring your binoculars and camera to document the many species that can be found here.

We hope you enjoy your park!

Facilities & Activities

The Rancocas Nature Center building is open Tuesday-Saturday 9am to 5pm and Sundays 12pm to 5pm; the center is closed Mondays and Holidays. The trails are open to the public from 8 AM to dusk. Park facilities currently available include:

- Hiking
- Restroom in nature center
- Wildlife Observation blinds
- Butterfly garden
- Gift shop
- Picnic Area
- Dragonfly Pond

Trail Use

The Rancocas Nature Center features 3 miles of marked trails through a range of various habitats. Please stay on the trails. Cross-country skiing and snowshoeing are also welcome when trails are snow-covered. Dogs and bike riding are not permitted on trails maintained by the nature center, but they are allowed in the remainder of Rancocas State Park.

Park Rules

1. The park is open from 8 AM to dusk. Dusk is defined as one-half hour after the posted sunset time. The Park is patrolled by Parks System Rangers and state park police before, during and after park opening and closing.
2. Please stay on the trails. Hiking and riding off the trails are not permitted.
3. Use of alcohol and tobacco are not permitted.
4. Dogs and bikes are not allowed on trails maintained by the Center. They are allowed on the trails in the remainder of Rancocas State Park
5. Please pick up your own trash and a little extra, if you can!
6. Do not feed or approach wildlife – Enjoy from a distance.
7. Insect repellent and light-colored clothes with your pant legs tucked into your socks or boots are recommended. Always check yourself for ticks after visiting the park.
8. Please do not pick vegetation.
9. All-terrain bicycles and horses **MUST** use designated trails only and **MUST** give right-of-way to hikers. Follow trail markers.
10. No motorized dirt bikes or all-terrain vehicles allowed.
11. No swimming or ice skating.
12. No hunting, firearms or trapping.

Directions

From I-295

- Exit 45A (Mt. Holly/Willingboro Exit
- Head East on Rancocas Road. Center on right

From State Route 206

- Connect with Rt. 38 southeast of Mt. Holly. Take Rt. 38W to Rt. 541 By-Pass and turn right.
- Follow 541 By-Pass to Rancocas Rd (second intersection). Turn left on Rancocas Rd. Center on left

More Information

Burlington County Parks System
6 Park Avenue, P.O. Box 6000
Eastampton, NJ 08060
(609) 265-5858

Park Ranger on duty: (609) 668-5164

email: parks@co.burlington.nj.us

website: www.co.burlington.nj.us/parks

Burlington County Parks System

Rancocas Nature Center

Westampton Township, NJ

Trail Guide

Burlington County
Board of Chosen Freeholders

Department of Resource Conservation
Division of Parks

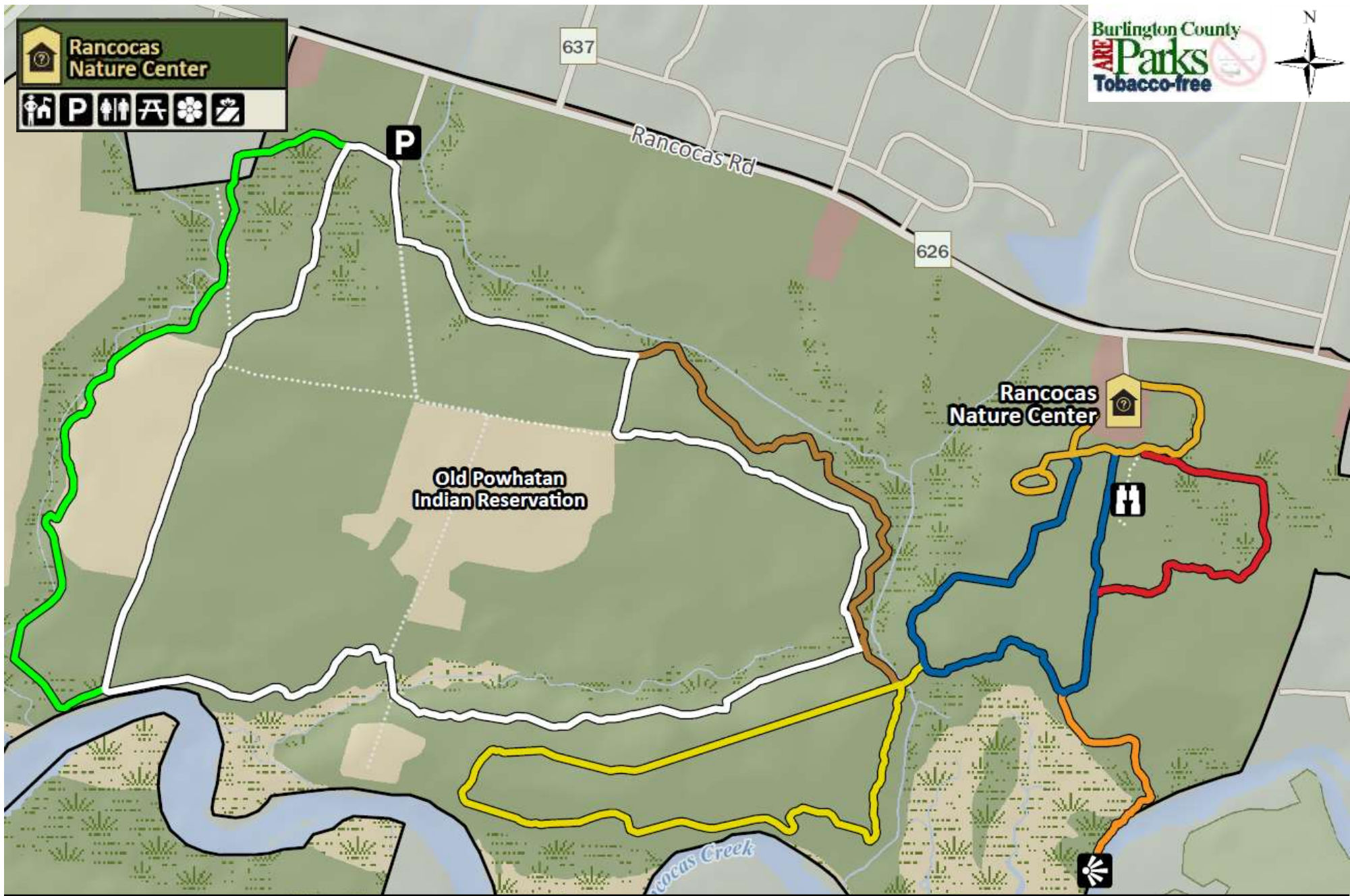


794 Rancocas Road
Westampton, NJ 08060
(609) 261-2495

<http://www.rancocasnaturecenter.org>

Rancocas Nature Center

Burlington County
ARE Parks
Tobacco-free



Open Field or Grass	Wetland	Deer Run Trail (.7 mi)	Rancocas Trail (2.2 mi)	Parking Lot	Park Office	Restrooms
Forest	Little Brook Trail (.8 mi)	Squirrel Run Trail (.5 mi)	Garden	Picnic Area	Scenic View	Wildlife Viewing
Developed Area	Maple Leaf Trail (.4 mi)	Turkey Feather Trail (.25 mi)	Interpretive Center	Shop		
Water	Meadow View Trail (.4 mi)	Whispering Woods Trail (1 mi)				