

Directions

803 Smithville Road, Eastampton, NJ 08060

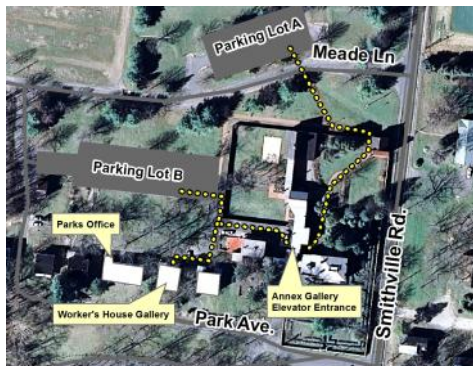
Historic Smithville Park is located in Eastampton, NJ on Smithville Road, about 3/4 mile off Rt. 38. Parking lots are shown on the map.

From Ben Franklin Bridge: Take Rt. 30. Follow signs for Rt. 38 East. Follow directions under "Heading East on Route 38" below:

Heading East on Route 38: From Intersection of Rt. 541 and 38: head East on Rt. 38 for 2.9 miles and turn left onto Smithville Road. Travel 3/4 mile and turn left onto Meade Lane.

Heading West on Route 38: From Intersection of Rt. 206 and 38: head West on Rt. 38, travel 3/4 mile past the NJ Motor Vehicle Inspection Station and turn right onto Smithville Road. Travel 3/4 mile and turn left onto Meade Lane.

Via Route 295: Take Rt. 295 to Exit 47A—Mt. Holly Rt. 541 S. Travel 2.5 miles, (pass 4 traffic lights) before 5th light for Woodlane Rd. Take jug handle to make left onto Woodlane Rd. (Rt. 630). Take Woodlane Rd. to 4th light (Smithville Rd.). Make right onto Smithville Rd. and follow through one stop sign (blinking red light) at Powell Rd. Historic Smithville Park will be on your right.



Sponsored by
**The Burlington County
Board of Chosen Freeholders**

Exhibit Hours

Thursday, Friday & Saturday

10 a.m.—4 p.m.

Sundays— 12—4p.m.

No admission fee.

Questions?

Please contact us!

Phone: (609) 265-5858

Email: parks@co.burlington.nj.us

www.co.burlington.nj.us/parks



Persons in need of special accommodation should give a two-week notice by calling 609-265-5858, or e-mail parks@co.burlington.nj.us



Funding is made possible in part by the New Jersey State Council on the Arts/Department of State, a Partner Agency of the National Endowment for the Arts from a grant to the Burlington County Board of Chosen Freeholders, Department of Resource Conservation, Division of Parks.



NEW JERSEY
STATE
COUNCIL
ON THE
ARTS

WORKER'S HOUSE & GALLERY

2013 Schedule of Exhibits and Events



Women and the Civil War

May 9th–26th

From the Parlor to the Battlefield - Women of the Civil War Era

This exhibit will include artifacts from the 1860's which will give viewers a glimpse into the life of a typical Victorian woman....and one who chose a much different occupation--providing help to the wounded on the battlefield.



Program: *The Battle of Gettysburg: Where Were the Women?*

Speaker:

Jane Peters Estes—May 19th 1pm

In Celebration of: Earth Fair

June 9th–June 30th

Park Naturalist, Jennifer Bulava, will display her digital nature photography from the Burlington County Park



System with an emphasis on Smithville Park. Photographs include landscapes, animals, and plants from the County Parks.

Also on display will be recycled art created by local teens selected at the annual Teen Arts Festival held in March.

Earth Fair: June 9th, 10:30am- 4pm

Dolls of Distinction

July 25th–August 18th

Opening Reception: *July 21st, 2-4pm*

In Fact Inc. presents the African American Experience through dolls depicting historical figures and everyday life. The exhibition is provided by Alma Day, Claudia Cream and other local artists and collectors.



Doll Workshop: *August 11th 2–4pm*

Doll Demonstration: *August 27th (TBD)*

Through the Needle's Eye

Colonial West Jersey Chapter of the Embroiderer's Guild of America, Inc.

September 15th–October 22nd

Opening Reception: *September 22nd, 2013*

Members of the Guild will display their needlework in all areas of stitchery including classic crewel embroidery and canvas work, applique and creative stitchery. This collection arrives just in time for *Arts in the Park* and closes with the *Fall Foliage Family Float Festival*.



“Come Stitch With Us” at

Arts in the Park- September 15th, 10 am–4pm

Last chance to view the show:

Fall Foliage Family Float Festival- October 22nd, 10am–4pm

Events subject to change without notice

Native American Heritage Show

November 2nd–25th

In celebration of Native American Heritage



Month, Native New Jersey invites you to take a walk into the history and culture of New Jersey's first people. Learn about the culture, traditions, clothing and community of the Lenape people. In addition

to artifacts and crafts, the exhibit includes photography highlighting the modern day community and culture of the Nanicoke Lenni Lenape Indians of New Jersey.

Native American Heritage Fest:

November 2nd, 2 - 4pm

Holiday at the Worker's House

December 7th- 31st, 2013

Join us for the holiday season at the Worker's House this winter.

See the home that Hezekiah B. Smith and his wife Agnes designed in their own unique style to create a village all their own with the lasting building that still stands today. See the home decorated for Christmas as the factory workers would have done so in the nineteenth century.



Victorian Holiday Event:

December 8th 12–4pm