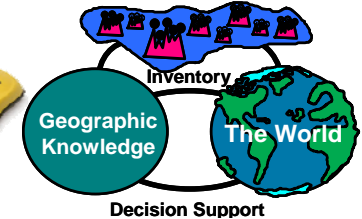
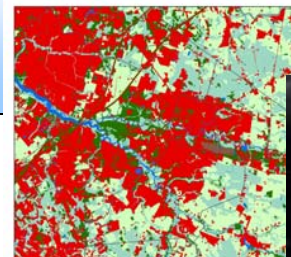


Join us In Celebrating GIS Day!  
 GIS Day at Burlington County College,  
 November 13, 2013



BURLINGTON COUNTY COLLEGE

*We Can Get You There.*



### What is GIS?

More than one million people across the globe rely on geographic information system (GIS) technology to solve problems and make better decisions by thinking and planning geographically. GIS combines computer hardware, software, and data to collect, manage, and analyze geographic information.

With GIS, users can view relationships, processes, patterns, and trends in the form of maps, globes, reports, and charts. From mapping wildfires to finding the best location for your favorite coffee shop, GIS helps people see how the world works and changes.

### What is GIS Day?

Since 1999, more than 10,000 organizations have participated in GIS Day by hosting events such as open houses, hands-on workshops, community expos, career fairs, school-wide assemblies, and mapping projects. GIS Day success is due to the hard work and dedication of GIS users around the world who see the importance of sharing their GIS knowledge with others.

### Learn how GIS & GPS are used!

GIS is used by many organizations for mapping, analysis, and decision making. Join us to find out more about the history of GIS, how it is being used in our area to assist college students to navigate around campus, teach high school students, conduct sidewalk inventories, map our world through remote sensing and much more!

### Who Should Attend?

All individuals interested in how geography, through the technology of GIS, affects your everyday life!

Organizations which use GIS are invited to display maps in the Map Gallery. Maps submission deadline is November 12<sup>th</sup>. For more information or to display a map in the Gallery, contact: Merrilee Torres at 609-702-7067 or mtorres@co.burlington.nj.us

## Event: GIS Day at Burlington County College

Date:	<b>Wednesday, November 13, 2013, 9:00 am – 4:30 pm</b>	
Time:	9:00-4:30	Map Gallery
	9:00-11:40	Speakers
	11:40-12:30	Lunch
	12:30-1:00	Balloon Mapping Demonstration
	1:00-2:15 & 2:30-3:45	GPS Outdoor Field Activity
	1:30-4:30	MAGTUG Superstorm Sandy Seminar
	1:00-2:15 & 2:30-4:30	Hands-on, Self-paced GIS Lab Exercises
Location:	Burlington County College Mount Laurel Campus, Laurel Hall (Rm 320) & Technology Building (Tech 208) 3331 Route 38 Mount Laurel, NJ 08054	

### Description

GIS Day will kick off with a morning of speaker presentations highlighting GIS applications across various industries. The afternoon will include a demonstration of Balloon Mapping, the MAGTUG (Mid-Atlantic Geospatial Transportation Users Group, [www.magtug.wordpress.com](http://www.magtug.wordpress.com)) seminar focusing on Superstorm Sandy, a hands-on GPS exercise using professional equipment, and GIS exercises using professional software. A Map Gallery will be on display throughout the day. This is also an opportunity to learn about BCC's Geospatial Technologies program. Participants can take part in activities where prizes will be awarded.

The event is free and refreshments will be provided.  
**Seating is limited and registration is requested.**



**For more information and registration go to: <http://www.co.burlington.nj.us/gisdayatbcc>**



# GIS Day

November 13, 2013  
Burlington County College  
Mount Laurel Campus



## Speaker Presentations

9:00 – 11:35

Laurel Hall, Room 320

- 9:05-9:25 **Camden Student Population Analysis**  
Maya Thomas, Civil Solutions
- 9:30-9:50 **NJ Transit Mapping**  
Deborah Rose, Michael Baker Jr., Inc.
- 9:55-10:15 **WeTable**  
Nicole Minni & Ed Lewandowski,  
University of Delaware
- 10:15-10:30 **Feature Challenge & Break**
- 10:30-10:50 **Mapping Using Crowdsourcing & Social Media**  
John Reiser, Rowan University
- 10:55-11:15 **Hurricane Sandy**  
Tom Rafferty, NJ State Police
- 11:20-11:40 **Balloon Mapping**  
Sean McGinnis, Philadelphia Public Labs

11:40 – 12:30 Lunch

Laurel Hall, Room 320/304

Breakfast and lunch are sponsored by

Baker



We Can Get You There.



Brought to you by:  
Burlington County Board of Chosen Freeholders  
Burlington County College  
& MAGTUG



We Can Get You There.



## Balloon Mapping Demo

12:30 – 1:00

Outside

## Hands-on GPS Outdoor Field Activity

1:00 – 2:15 **Group A** Meet in Laurel Hall, Room 311

2:30 – 3:45 **Group B** Meet in Laurel Hall, Room 311

Learn about GPS and test-drive professional grade GPS units.

## Hands-on GIS Lab Exercises

1:00 – 2:15 **Group B** Technology Building, Room 208

2:30 – 4:30 **Group A** Technology Building, Room 208

Use professional GIS software in these exercises to solve real-life problems.

## MAGTUG Superstorm Sandy Seminar (open to the public)

1:30 – 4:30 Laurel Hall, Room 320

- **FEMA Geospatial Response to Superstorm Sandy: Opening of a New Era**  
Julia O'Brien, FEMA
- **Preventing Future Inundation at the World Trade Center**  
Steve Eberbach, Michael Baker, Jr., Inc.
- **Videolog & Sign Management Systems Interactive Demo**  
Dave Wagner, GPI
- **Coastal Surge Inundation Mapping on the NJ Turnpike & Garden State Parkway**  
Anton Getz, Michael Baker Jr., Inc.
- **Lessons Learned from Using GIS for Damage Assessment**  
Tom Rafferty, NJ State Police

For more information and registration go to: <http://www.co.burlington.nj.us/gisdayatbcc>